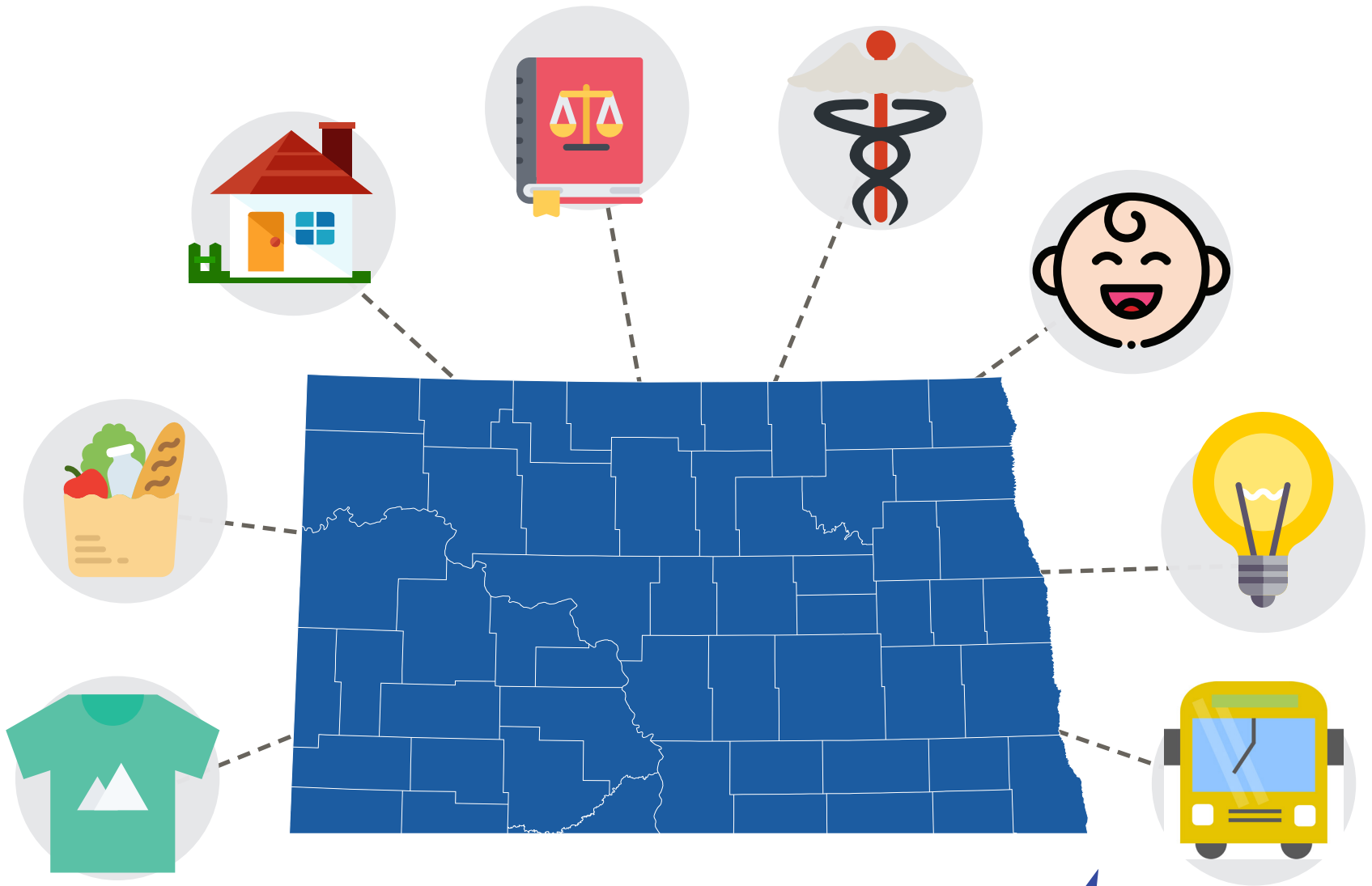


# DIAL 2-1-1

YOUR COMMUNITY CONNECTION



# 2-1-1<sup>TM</sup>

*Get Connected. Get Answers.*

CONFIDENTIAL AND FREE

CONNECTS PEOPLE WITH  
COMMUNITY RESOURCES  
24 HOURS A DAY

EASY TO REMEMBER

HEALTHCARE \ HOUSING \ UTILITIES \ LEGAL HELP \ EMPLOYMENT \ FINANCIAL ASSISTANCE ADDICTIONS \ MENTAL HEALTH  
\ DISABILITY SERVICES \ FOOD \ CLOTHING \ DISASTER SERVICES \ VOLUNTEER OPPORTUNITIES

**SIMPLY DIAL 2-1-1 OR 701-235-7335**

**FirstLink**

SERVING NORTH DAKOTA & CLAY COUNTY, MINNESOTA