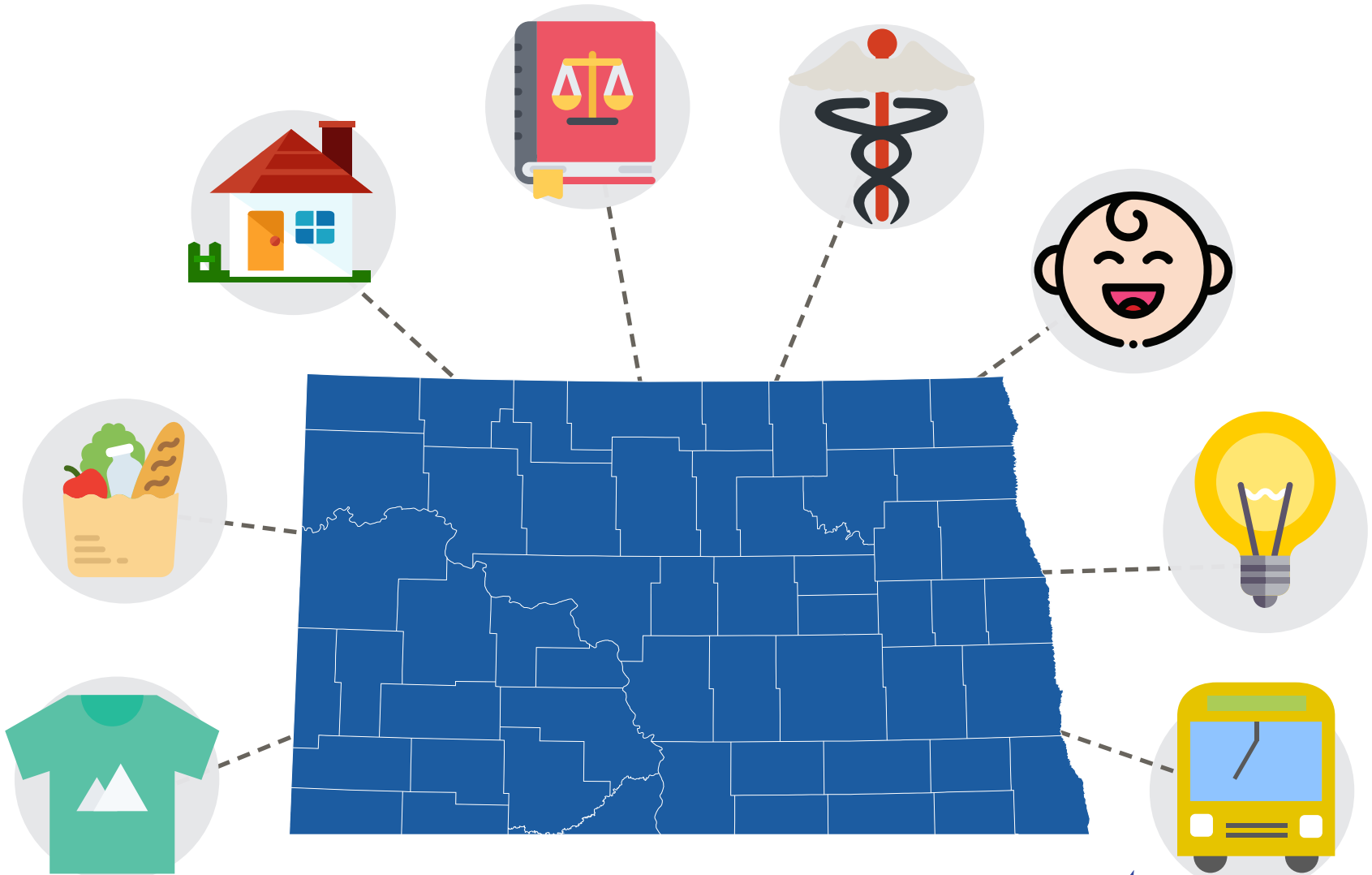


# 2-1-1

YOUR COMMUNITY CONNECTION



# 2-1-1™

*Get Connected. Get Answers.*

CONFIDENTIAL AND FREE

CONNECTS PEOPLE WITH  
COMMUNITY RESOURCES  
24 HOURS A DAY

EASY TO REMEMBER

HEALTHCARE \ HOUSING \ UTILITIES \ LEGAL HELP \ EMPLOYMENT \ FINANCIAL ASSISTANCE \ ADDICTIONS \ MENTAL HEALTH  
\ DISABILITY SERVICES \ FOOD \ CLOTHING \ DISASTER SERVICES \ VOLUNTEER OPPORTUNITIES

**TEXT YOUR ZIPCODE TO 898-211 OR  
DIAL 2-1-1 OR 701-235-7335**

## **FirstLink**

SERVING NORTH DAKOTA & CLAY COUNTY, MINNESOTA